



BELMOND

# GRAND TOUR OF BOTSWANA

BOTSWANA

ESCAPE INTO WILD INDULGENCE



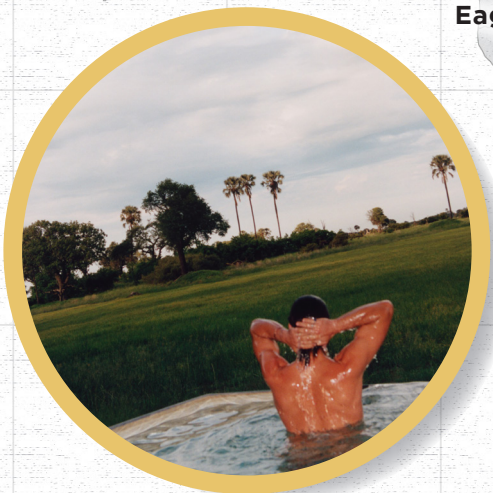
# BELMOND'S SOUTHERN AFRICAN ESCAPES EMBRACE TWO THRILLINGLY DIFFERENT SAFARI EXPERIENCES IN BOTSWANA.

**Eagle Island Lodge** is in the heart of the Okavango Delta. **Savute Elephant Lodge** sits beside the mysterious Savute Channel. Both offer experienced guides, rich wildlife encounters and unique activities. Together they enchant even the most seasoned safari traveller.



**Eagle Island Lodge**  
Botswana

**Savute Elephant Lodge**  
Botswana





# ANSWER THE CALL OF THE WILD WITH OUR DUO OF ADVENTURES

## ULTIMATE OKAVANGO

**Eagle Island Lodge** is a sustainably designed and built sanctuary that takes you magically close to the Delta's rich wildlife. Drift through the watery landscape on a mokoro canoe, spotting hippos and kingfishers, or fuel your adrenaline with a thrilling helicopter and horseback safari.

## DYNAMIC LANDSCAPE

Elephants are, not surprisingly, the main attraction at **Savute Elephant Lodge** which boasts an exemplary eco-friendly design, luxurious spa and viewing hide. The majestic inhabitants are drawn to the mysterious Savute Channel, which flows and dries up seemingly at whim.



## RATES

Embark on the ultimate African adventure and take advantage of one of our fantastic offers below.

### GREEN SEASON:

01 JANUARY - 31 MARCH | 15 NOVEMBER - 20 DECEMBER 2025

4 Night stay: **\$6 520** per person sharing

6 Night stay: **\$9 380** per person sharing

### SHOULDER SEASON:

1 APRIL - 31 MAY | 1 OCTOBER - 14 NOVEMBER 2025

4 Night stay: **\$7 580** per person sharing

6 Night stay: **\$9 840** per person sharing

### HIGH SEASON:

1 JUNE - 30 SEPTEMBER 2025

4 Night stay: **\$10 950** per person sharing

6 Night stay: **\$14 330** per person sharing

### PEAK SEASON:

21 DECEMBER - 31 DECEMBER 2025

4 Night stay: **\$11 420** per person sharing

6 Night stay: **\$14 960** per person sharing

### RATE INCLUDES

Enjoy a Four- or Six-night safari at any combination of our lodges, fully inclusive of meals, local beverages and safari activities.

Light aircraft flights from/to Maun and between the lodges, departure taxes and national park fees in Botswana, VAT and taxes.

Stays between the lodges can be non-consecutive but must form part of the same itinerary.

*Please note:*

*Supplement for flights to/from Kasane Airport (BBK):*

*Green Season: \$280 per person per flight leg*

*Shoulder Season: \$260 per person per flight leg*

*High/Peak Season: \$235 per person per flight leg*

*Single rate, 3rd person rate and child supplement applies*





## RESERVATIONS

Please contact your professional travel advisor or Belmond Safaris reservations offices and ask for the **Grand Tour of Botswana** offer.

South Africa:

Tel: +27(0)21 483 1600

Email: safaris@belmond.com

North America:

Tel: (toll-free) +1 800 957 6137

Email: africajourneys@belmond.com

**BELMOND.COM**

# BELMOND SAFARIS

A BELMOND EXPERIENCE  
BOTSWANA

## TERMS AND CONDITIONS

- Valid for travel from 01 January 2025 - 31 December 2025, stays between the lodges can be non-consecutive, but must form part of the same itinerary.
- All conditions and rates are subject to change without notice.
- Valid for a maximum of 4 rooms per booking, not applicable to groups.
- A complete itinerary (dates and lodges) is requested at time of reservation, subject to availability.
- Stays at various lodges can also be non-consecutive; last arrival to take place within 45 days of first arrival.