

## PRESIDENTIAL SUITES Belmond La Residencia

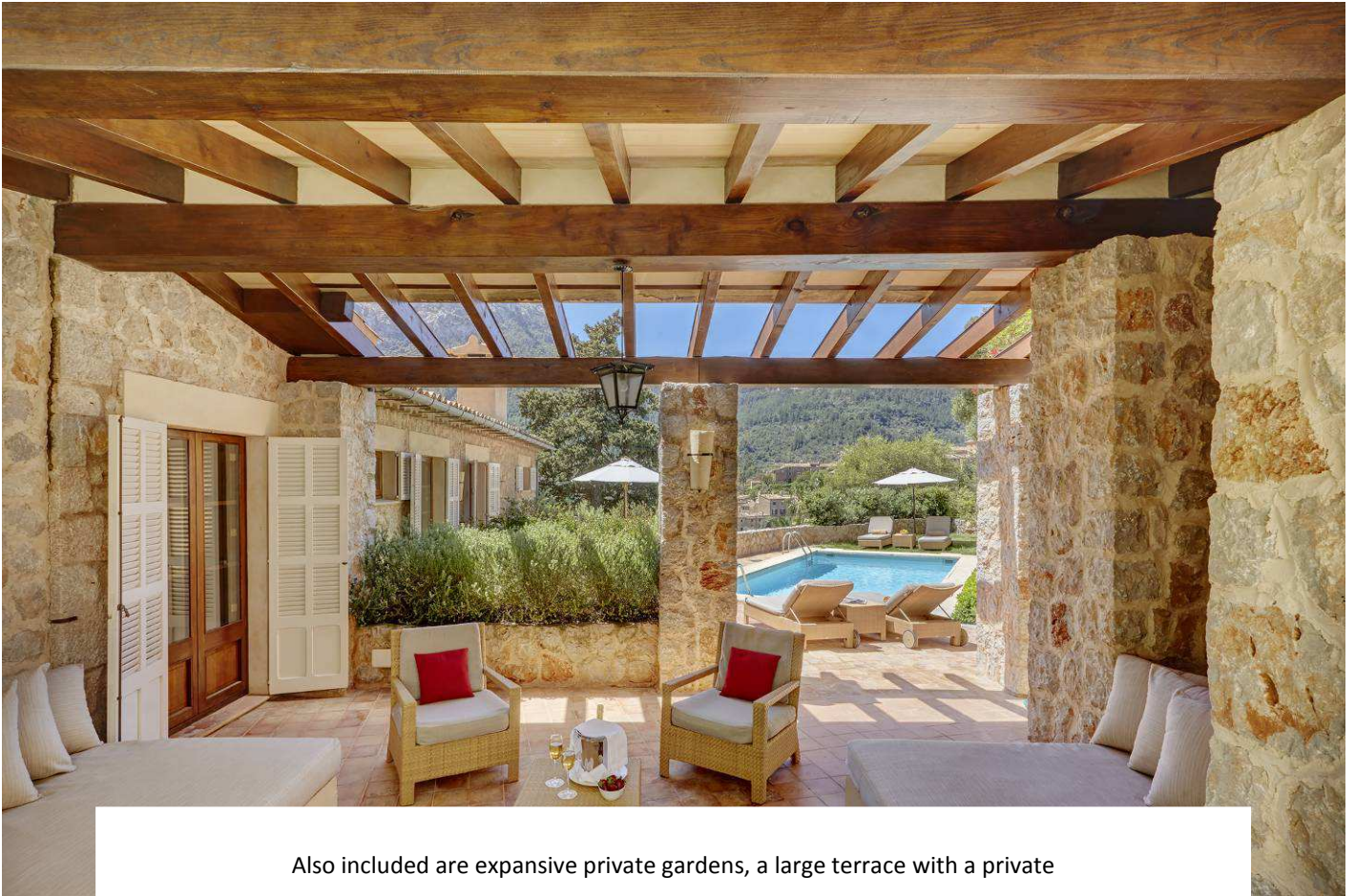
Belmond La Residencia's Presidential Suites are ideal for privacy and relaxation, featuring beautiful views over the village of Deià and the Tramuntana Mountains. Located in the Son Fony building, these suites offer a very spacious lounge area with luxurious fittings in unique Mallorquin style including the finest quality linens.



### Presidential Suites Details

Location:	In the Son Fony building
View:	Beautiful views over the village of Deià and the Tramuntana Mountains
Beds:	King size four poster bed Extra bed (on request)
Bathroom:	1 marble bathroom
Max occupancy:	3 people, or 2 adults and 1 child
Size:	140 m <sup>2</sup> ; 1507 sq.ft.
Features:	Private garden with swimming pool (8 meters x 4 meters) Outdoor dining area and a covered pergola with sitting area

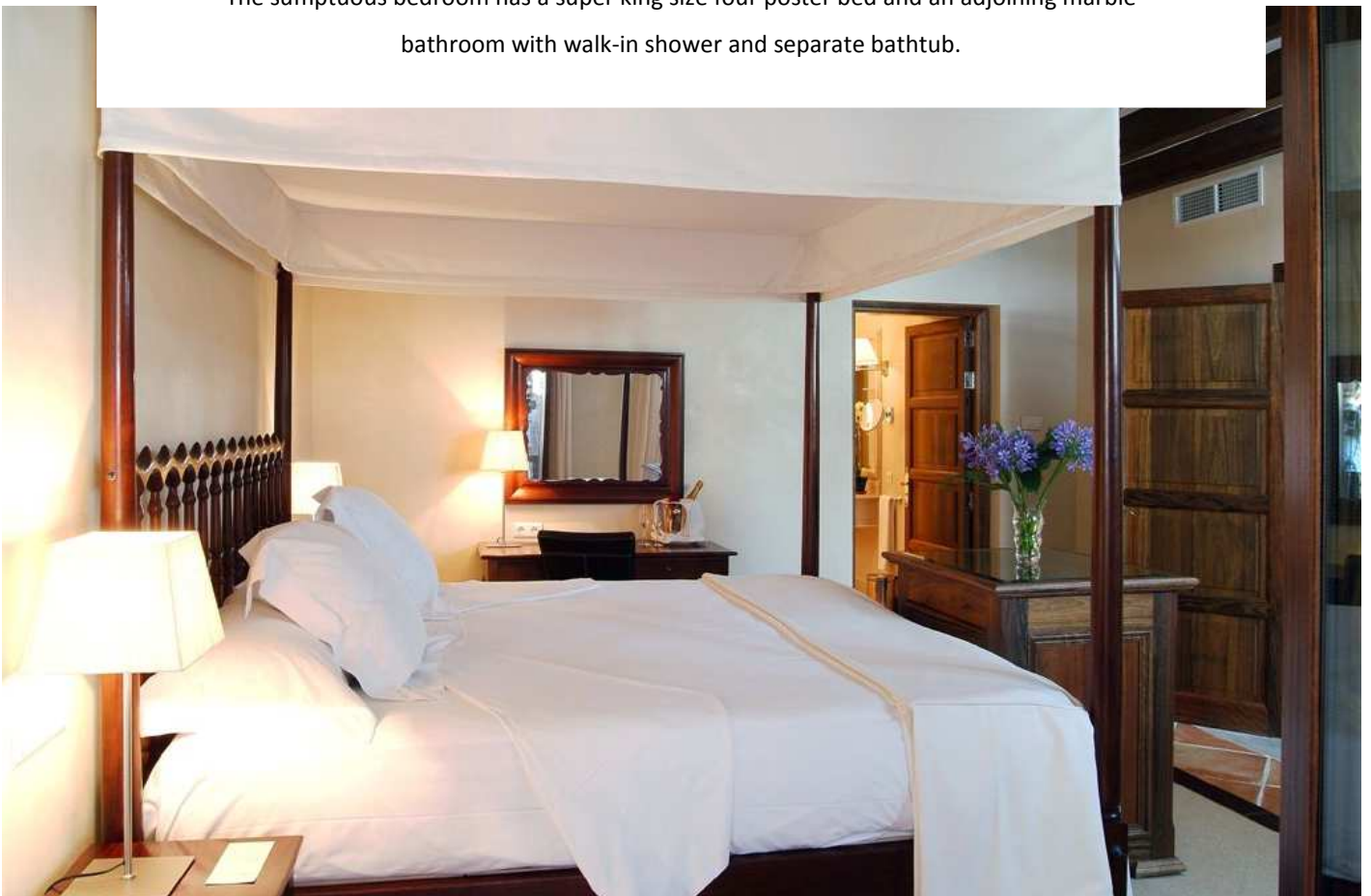
Upon request, both Presidential Suites can be connected to a double room.



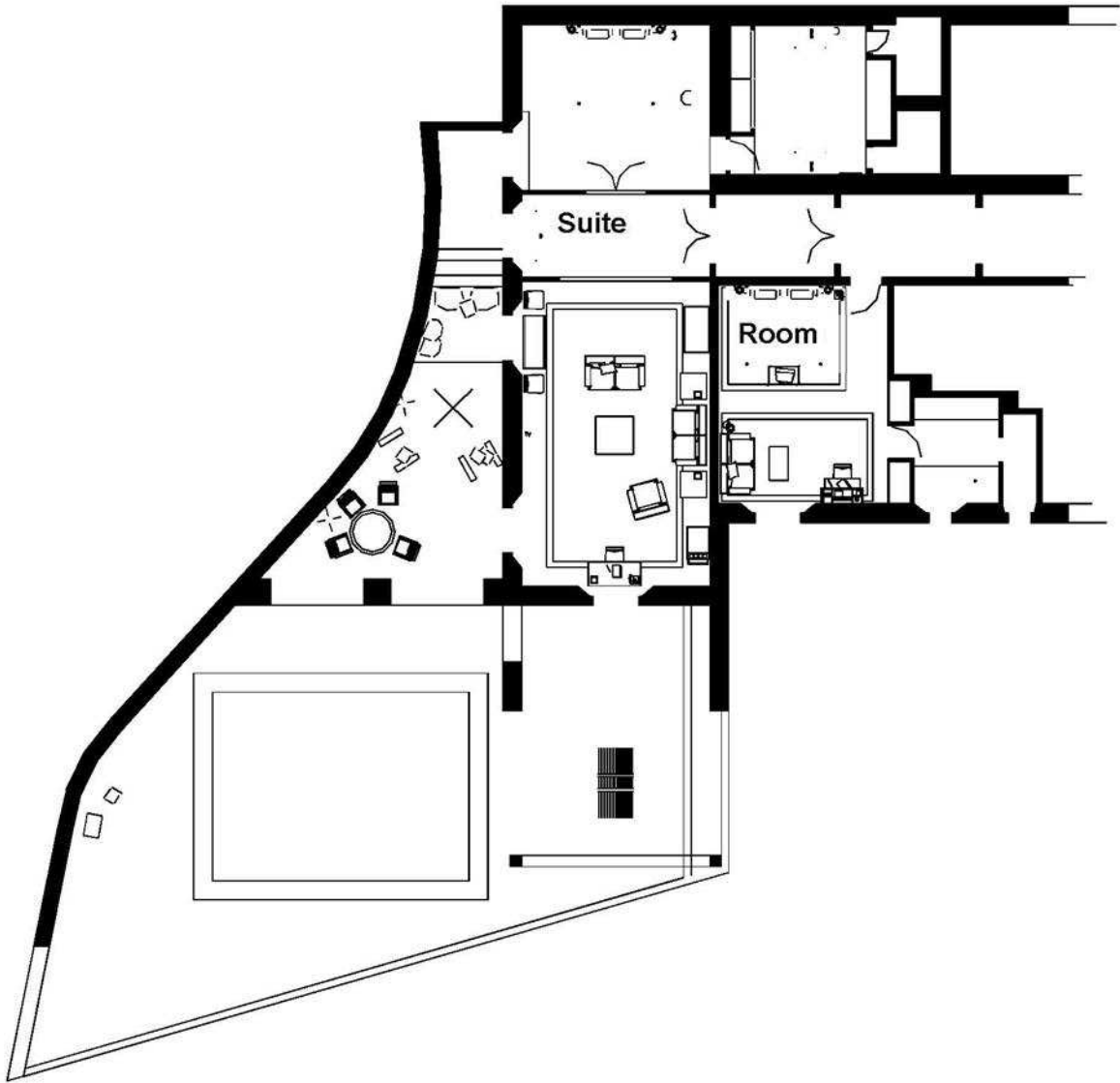
Also included are expansive private gardens, a large terrace with a private swimming pool (8 metres x 4 metres) and space for outdoor dining.

A separate lounge with a sofa bed leads out onto the lovely large terrace area.

The sumptuous bedroom has a super king size four poster bed and an adjoining marble bathroom with walk-in shower and separate bathtub.



# PRESIDENTIAL SUITE 54



# PRESIDENTIAL SUITE 66

