



## EL ENCANTO

A BELMOND HOTEL  
SANTA BARBARA

MEETINGS AND EVENTS

SERENITY OVERLOOKING THE SANTA BARBARA COAST



## MEETINGS AND EVENTS



EL ENCANTO, A BELMOND HOTEL, PERCHED HIGH IN THE SANTA BARBARA HILLS, IS AN ICONIC HOTEL OFFERING THE BEST VIEWS OF THE AMERICAN RIVIERA. A PROVEN MEETING AND INCENTIVE DESTINATION, EL ENCANTO'S PICTURESQUE LOCATION INSPIRES THE FREEDOM TO DELIVER MORE FOR YOUR GUESTS.

### AT A GLANCE

**ACCOMMODATION** Ninety-two quintessential, California-styled rooms, suites and bungalows.

**DINING** The Dining Room and Terrace, Lounge and Bar

**FEATURES** The Spa, zero-edge pool and 7-acre garden

**EVENTS** Indoor and outdoor event spaces for meetings, weddings, socials and incentive gatherings.

**ACTIVITIES** Wine tours, coastal sailing trips, fine dining, wellness classes, cooking schools, shows, concerts, biking, parasailing, hiking

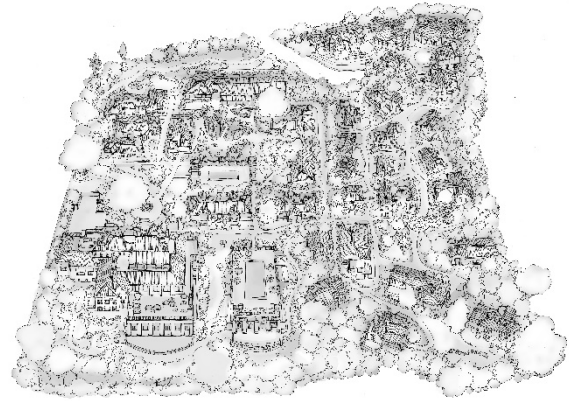
**LOCATION** Nestled between lush green mountains and a crystal blue sea, El Encanto sits atop a Santa Barbara hill just minutes away from exquisite restaurants, fine galleries, boutique wineries and the beautiful California coast.

### AIRPORTS

9 miles/15 minutes from Santa Barbara Municipal Airport

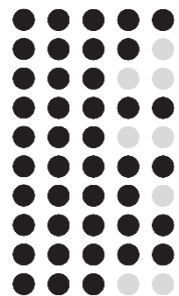
97 miles/1 hour and 30 minutes from Los Angeles International Airport

Santa Barbara Airbus offers daily scheduled in-terminal LAX to Santa Barbara pick up and drop off services in luxury motorcoach shuttle buses



### IDEAL FOR

Incentives  
Corporate and Board Meetings  
Conferences  
Celebrations  
Product and Brand Launches  
Car Rallies and Car Launches  
Buyouts  
Cultural and Leisure Groups  
Photo/Video Shoots  
Alumni Travels



### INSIDER TIPS

Original architectural features have been lovingly preserved, including the historic, trellis-lined Arbor and Lily Pond. Modern additions to the expansive outdoor swimming pool and a beautifully appointed boutique spa enhance the journey for today's meeting or incentive guest. Santa Barbara's reputation as the American Riviera is well-earned by the temperate weather and sophisticated ambiance overlooking the Pacific Coast.

## MEETINGS AND EVENTS



ROOMS		SUITES	
5 Superior Kings	350 square feet	6 One-Bedroom Suites	540-735 square feet
27 Deluxe Kings	450-690 square feet	7 Terrace Suites	535-650 square feet
7 Deluxe Doubles	520-660 square feet	5 Terrace Premier Suites	600-800 square feet
6 Premier Kings	540-655 square feet	5 Specialty Suites	860-1100 square feet
10 Terrace Premier Kings	540-730 square feet		
11 Terrace Kings	410-540 square feet		
3 Garden Bungalows	655-670 square feet		
70 TOTAL ROOMS		22 TOTAL SUITES	

Currently, all guest room rates are subject to a 12% city tax, Santa Barbara South Coast Tourism Business Improvement District assessment of 2% and California Tourism assessment of 0.195%.

## RESORT AMENITIES

- Zero-edge outdoor swimming pool with panoramic ocean views
- Full-service spa: 4,500 square-feet with seven treatment rooms
- Fully equipped Fitness Studio and complimentary fitness classes
- Seasonal welcome amenity
- 24-hour room service
- High-speed wireless Internet access
- Shoe shining service
- In-room Nespresso and tea
- Complimentary use of E-Bicycles upon reservation







## MEETINGS AND EVENTS



---

### RESTAURANTS & BARS

Indoor and outdoor seating offer stunning settings with spectacular ocean views.

#### THE DINING ROOM

Serves expertly prepared California coastal cuisine, accommodates 44 guests on an individual basis.

#### THE TERRACE

Offers comfortable dining with ocean views, accommodates 86 guests on an individual basis.

#### THE LOUNGE

Perfect for Afternoon Tea or sunset cocktails, accommodates 40 guests on an individual basis.

#### THE RIVIERA BAR

Adjacent to The Dining Room and The Lounge, accommodates 24 guests on an individual basis.

#### THE WINE ROOM

Set amongst The Dining Room. This private enclave is for celebrations and gatherings up to 14 guests.

#### THE POOL

Beverages, all-day dining, snacks and lunch are available poolside on an individual basis.

---

### MEETINGS AND EVENTS

El Encanto optimizes your meetings and incentives with four separate meeting rooms offering a combined total of 4,660 square feet of comfortable indoor space. The flexible 3,000-square-foot ballroom serves large gatherings and can be divided into two spaces when needed.

All our spaces offer beautiful natural daylight, individual climate control, outdoor space and video conferencing capabilities. For those interested in more festive events, the resort offers ideal facilities for memorable celebrations.

Ask us about buying out the entire 92 Room Resort and all our spaces, including The Dining Room and Terrace, Lounge and Bar, and Pool are yours to use on an exclusive basis!

For inquiries, please contact the sales office at [ele.sales@belmond.com](mailto:ele.sales@belmond.com) or your trusted contact professional.

## MEETINGS AND EVENTS

### INDOOR LOCATIONS: 4,580 SQUARE FEET

ROOM NAME	SQUARE FEET AND ROOM CONFIGURATION	ROOM OCCUPANCY
Riviera Ballroom & Riviera Ballroom Patio	3,000 square feet (divides into 2,000 & 1,000) <i>Ground Level</i>  Private indoor and outdoor space. Five double glass doors leading to a covered heated patio (1,000 square feet) with garden views	200 Reception 200 Theater 185 Banquet 125 Classroom 100 Hollow Square 85 U-Shape
Fireside Room & Fireside Patio	530 square feet Fireside Room 580 square feet Fireside Patio <i>Floor Level 1</i>  During the cooler months, host a spectacular event in the toastiest of hillside locations. Guests can curl up in front of the roaring fireplace or head out onto the pool patio for a moonlit stroll to see the Channel Islands flickering on the horizon.	125 Reception 40 Banquet 22 Classroom 18 Conference 18 Hollow Square 15 U-Shape 55 Theater
Channel Islands Room & Channel Islands Terrace	400 square feet Channel Islands Room 560 square feet Channel Islands Terrace <i>Floor Level 2</i>  Enjoy a grand banquet, reception or conference in the sophisticated interiors. Or gather on to adjoining outdoor patio to the expansive Channel Islands Terrace during golden hour and enjoy the best panoramic views of Santa Barbara.	44 or 125 reception (including foyer) 40 Banquet 20 Classroom 16 Conference 14 Hollow Square 12 U-Shape 44 Theater
Santa Ynez Room	380 square feet <i>Floor Level 2</i>  The perfect place to gather in any season, this light, airy space features the latest audiovisual equipment to ensure your presentations have an impact. The room comfortably accommodates small groups for intimate gatherings, business lunches or conferences.	14 Conference
The Wine Room	270 square feet <i>Floor Level 1</i>  Located in the hotel's dining room, our chic wine room is an atmospheric choice for intimate celebrations or private parties. Speak to our expert team to arrange a bespoke introduction for guests, followed by a tasting of the room's best bottles.	14 Conference
Arbor and Lily Pond	4,100 square feet <i>Ground Level</i>  Frequented by butterflies and other wildlife, the Arbor and Lily Ponds provide a serene escape for beautiful weddings or corporate events with a fairytale finish.	up to 200 guests
The Riviera Theater	Walk just a few minutes from El Encanto to the Riviera Theater to host company rallies, meetings, and private screenings. The theater is rigged with a stunning new projector and sound system comprising a Dolby Vision laser projector and the expansively spatial Dolby Atmos audio system, which takes the output from four to some 50 speakers around the room.	up to 328 guests

### TOTAL FUNCTION SPACE: 9,820 SQUARE FEET

*Event space rental is additional. Charges for AV equipment and/or staff are additional.*

### PRICING GUIDELINES

Breakfast: \$75-\$85 | Brunch: \$135 | Lunch: \$65-\$165

Reception: \$85-\$165 | Plated Three-Course Dinner: \$135-\$185

*Prices are per person and exclusive of 24% service charge and 8.75% sales tax.*



---

## WITHIN OUR WALLS

In our Spanish Colonial Revival walls, draped in bougainvillea, is where your story begins. Join a long list of star-studded guests at our American Riviera utopia.

Watch out for woodpeckers, cranes and monarch butterflies swirling in the heady summer air as you sip on your drink of choice.

Let us pamper you as the refreshing scent of eucalyptus drifts through the air. In our spacious spa, all treatments are inspired by nature's healing powers.

300 days of sunshine a year provide the perfect excuse for a dip. Swim in our zero-edge pool while gazing out at the Pacific Ocean

Our passion for artisanal ingredients and exception flavors matches the region's culinary abundance. Expect in-season herbs from our ocean-facing gardens and fresh seafood caught daily from the shores below.

Steeped in charisma and charm, our breezy hillside location will make your event even more special. Pacific-facing gardens and an expansive terrace await

Whether you're hot for hiking or yearning for yoga, we have a class for you. Need guidance? Just request a one-to-one session with our inhouse instructor.



---

## OUT AND ABOUT

Explore Santa Barbara's Urban Wine Trail via a series of nearby tasting rooms. Or journey to Santa Ynez Valley, just a 30-minute drive away. Here you'll find more than 2070 wineries producing regional favorites including Pinot Noir and Chardonnay. El Encanto is the closet luxury hotel to the Santa Ynez Valley

California is a world-class sporting destination, and for good reason. Experience the ridges and bluffs of the Santa Ynez Mountains. Grab a surfboard and head down to Rincon Point. For something more leisurely, paddle board along the coast at sunset.

Of all the indulgent things to do in Santa Barbara, a little boutique browsing is essential. Take one of our complimentary electric bikes into fashionable downtown Santa Barbara. Discover independent labels and artisanal souvenirs, or simply window shop as you soak up the sun.





---

## HOTEL POLICIES

### GUARANTEE

The Private Events department must be notified of the exact number of guests attending no later than 72 hours prior to the start of the event. This will be considered a guarantee, for which you will be charged, even if fewer guests attend the event. The Resort will prepare and set for 5% above the guaranteed number, if requested. Your event manager must receive final menu selections for all food and beverage no later than 30 days prior to the event. Should more guests attend, the higher number will be charged. Rooming list must be submitted by the cut off date. All purchases in the planning process are to be prepaid 72 hours in advance of arrival.

### PREFERRED PROFESSIONAL VENDORS

The Resort is pleased to recommend a variety of professionals who may assist you in providing services to enhance your event. The Resort must approve all contracted event professionals and require a signed vendor policies and procedures contract 7 days prior to your event. Should you elect to have the Resort coordinate any outside services, we will charge an administrative fee of 20% on the total amount of all vendor charges. This includes, but is not limited to: transportation, floral, decor, rental equipment, and off-site activities

### EVENT SERVICES AND EQUIPMENT

The Resort will provide standard labor for the set-up, breakdown and cleaning of all event space. Each event space may include Resort's tables, chairs, napkins, floor length linens, stemware, flatware, china, and votive candles. The Private Events team may assist in planning all aspects of your event and specialize in customizing and designing events to meet your needs. Special services such as document copying, shipping, signage and audio/visual needs can be provided, additional fees may apply.

### DECORATIONS AND DECOR

The Resort does not permit any items to be attached to any wall, floor, window or ceiling with nails, tape, staples or any other substance. Any decorations or displays brought into the Resort must be approved prior to the event. Open flames, such as candles, are not permitted without a protective enclosure. Additionally, the Resort does not permit any confetti, rice or paper to be used. Sparklers are not permitted in any area.

### WEATHER AND TENTING

Tenting is permitted in certain areas, inquiry for further information with your event manager. All tenting must be approved in advance and is at the client's expense.

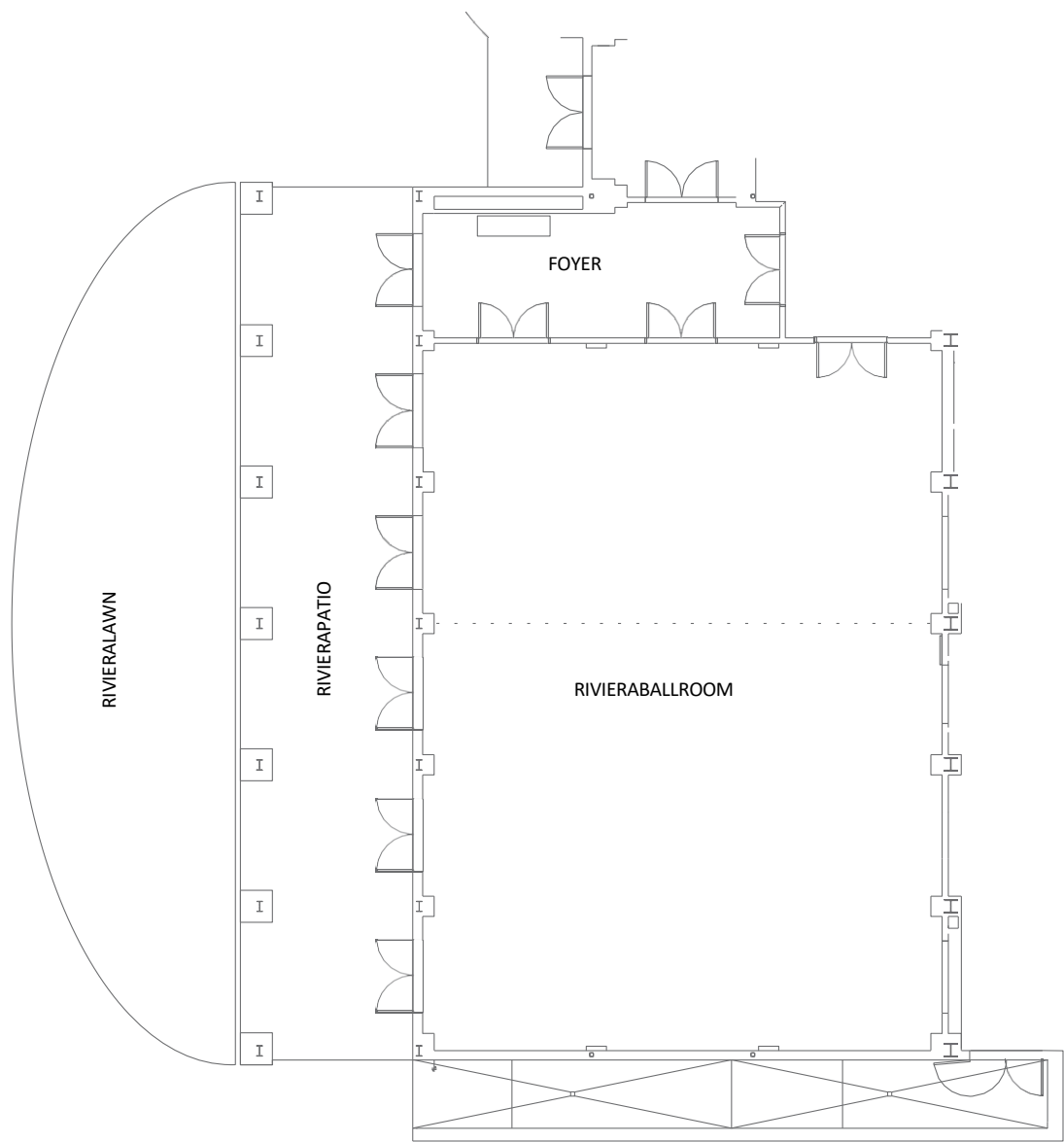
### NOISE CURFEWS

The Resort's curfew policy for outdoor venues including amplification permits events to start no earlier than 9:00am and are not permitted after 10:00pm. Before and after these times, patio doors must stay closed. **Noise curfew for the Lily Pond and Arbor does not permit events to continue after 9:00pm.**



# RIVIERA BALLROOM

The grand ballroom offers 3,000 square feet of elegance. Five double glass doors open onto a covered heated patio with garden views. A private, indoor pre-function space allows for intimate cocktail hours. Divisible into two smaller rooms of 2,000 and 1,000 square feet each.

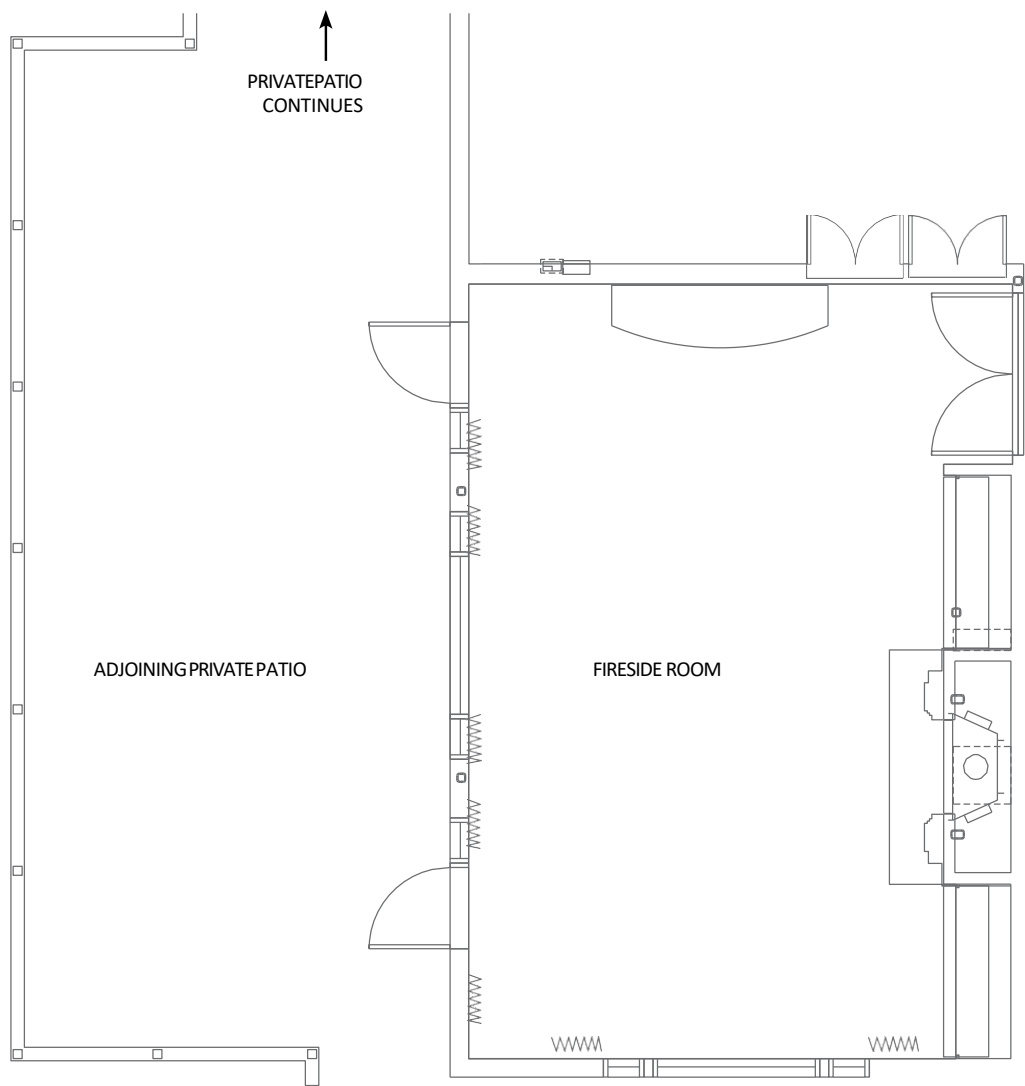


Floor	Ground Level
Square Feet	3,000 (2,000 & 1,000)
Ceiling Height	12'
Dimensions	43' x 69'
Reception	300
Banquet	200
Classroom	125
Conference	—
Hollow Square	100
U-Shape	85
Theater	300

All areas shown on this floorplan are approximate and should not be relied upon to determine precise design or dimensions.

# FIRESIDE ROOM & PATIO

This stylish den featuring a cozy fireplace leads out to a 500-square-foot patio overlooking the crystal pool and picturesque Channel Islands.



## FIRESIDE ROOM

Floor	1
Square Feet	530
Ceiling Height	9'6"
Dimensions	17'6" x 28'7"
Reception	55
Banquet	40
Classroom	22
Conference	18
Hollow Square	18
U-Shape	15
Theater	55

## FIRESIDE PATIO

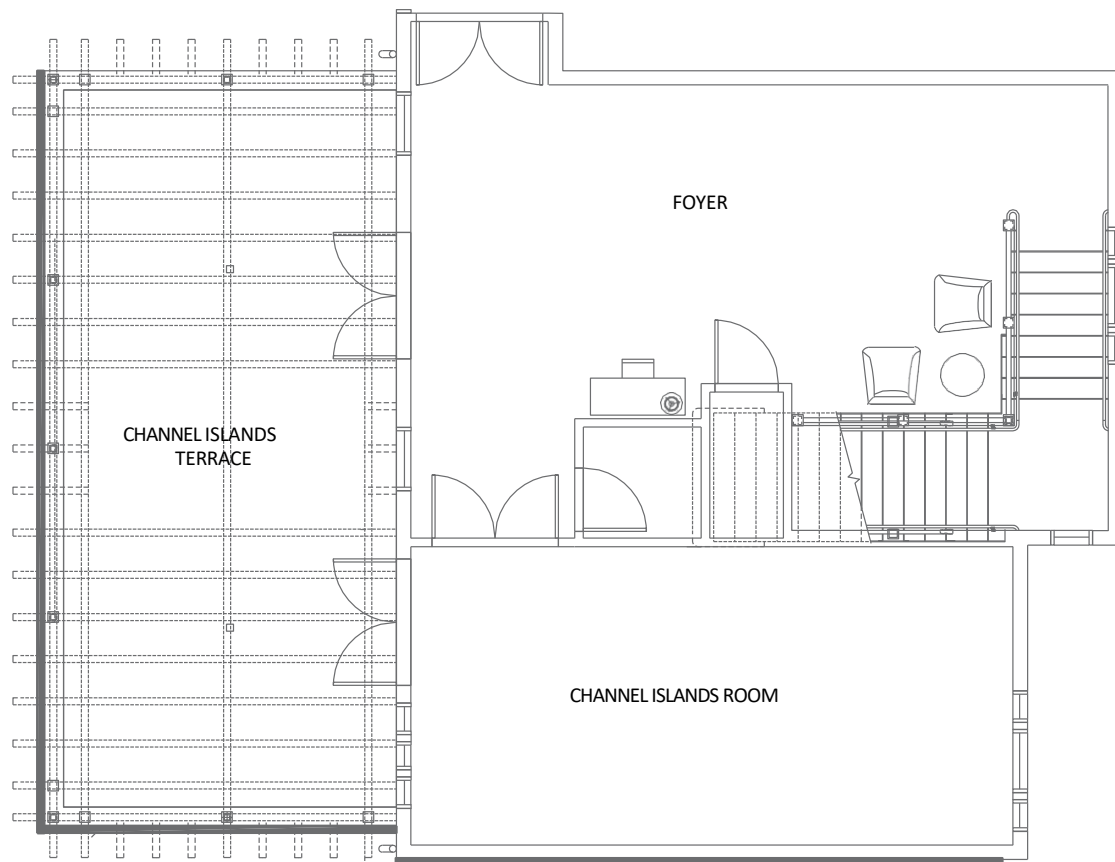
Floor	1
Square Feet	580
Ceiling Height	—
Dimensions	20' x 30'
Reception	70
Banquet	40
Classroom	—
Conference	—
Hollow Square	—
U-Shape	—
Theater	—

All areas shown on this floorplan are approximate and should not be relied upon to determine precise design or dimensions.



# CHANNEL ISLANDS ROOM & TERRACE

Bask in bright natural daylight or adjourn to the expansive covered terrace with stunning ocean, garden and city views.



## CHANNEL ISLANDS ROOM

Floor	2
Square Feet	400
Ceiling Height	9'
Dimensions	14' x 28'6"
Reception	44
Banquet	30
Classroom	20
Conference	16
Hollow Square	14
U-Shape	12
Theater	44

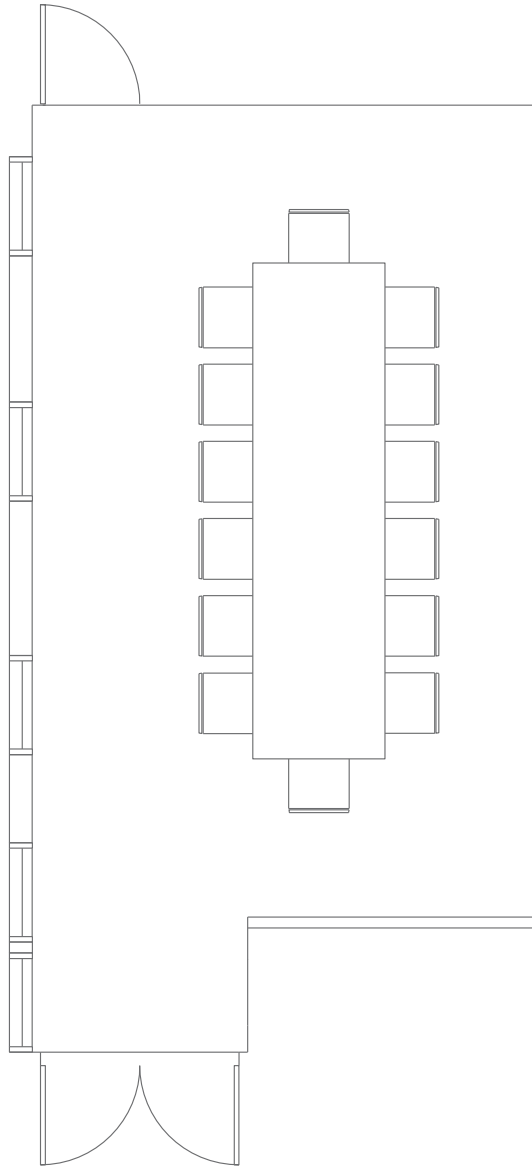
## CHANNEL ISLANDS TERRACE

Floor	2
Square Feet	560
Ceiling Height	—
Dimensions	16' x 35'
Reception	65
Banquet	40
Classroom	—
Conference	—
Hollow Square	—
U-Shape	—
Theater	—

All areas shown on this floorplan are approximate and should not be relied upon to determine precise design or dimensions.

# SANTA YNEZ BOARDROOM

This comfortable room featuring a built-in AV system comfortably accommodates 16 people around a sophisticated conference table for intimate gatherings.

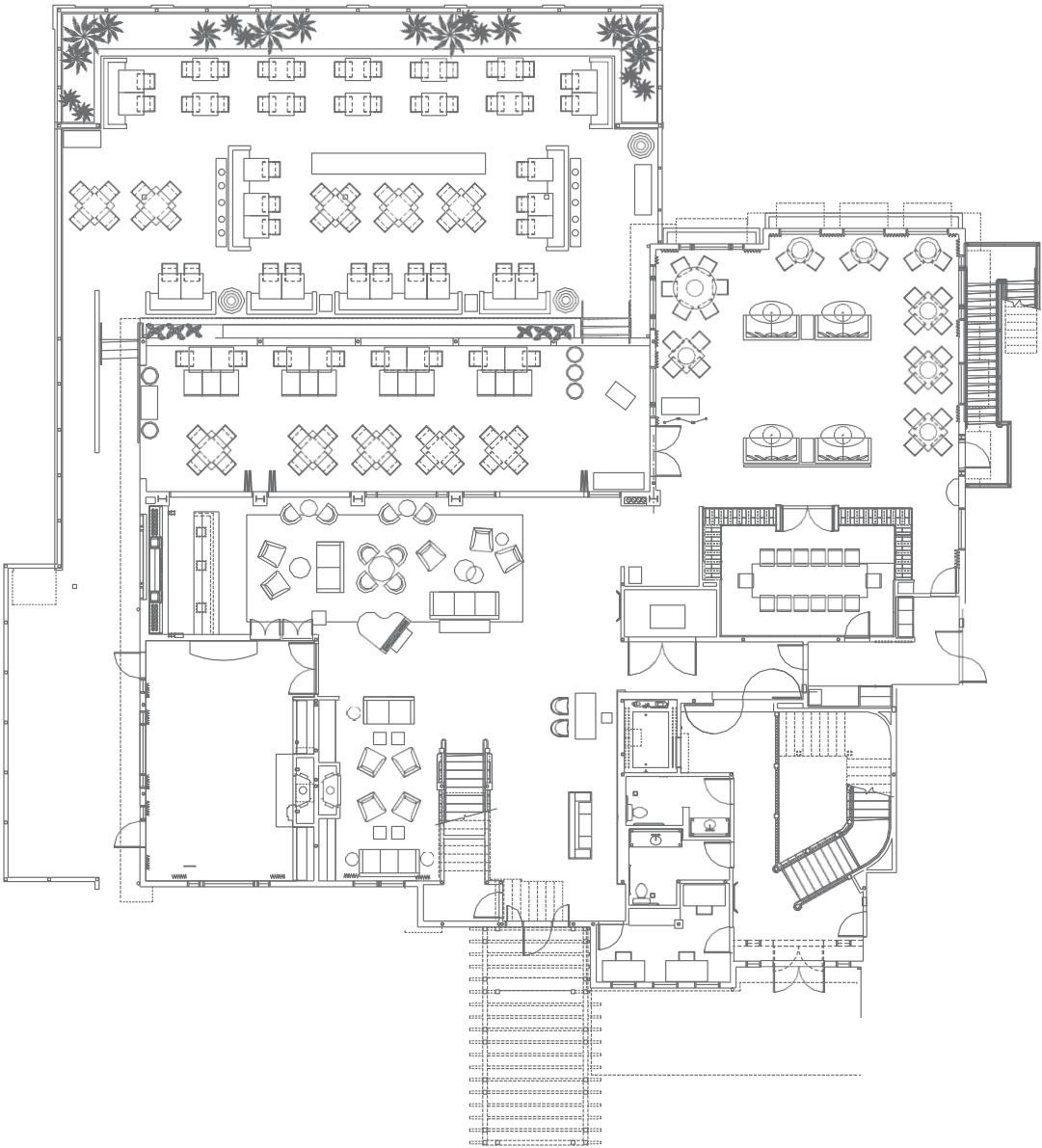


Floor	2
Square Feet	380
Ceiling Height	9'
Dimensions	15'3" x 24'6"
Reception	44
Banquet	30
Classroom	20
Conference	16
Hollow Square	14
U-Shape	12
Theater	44

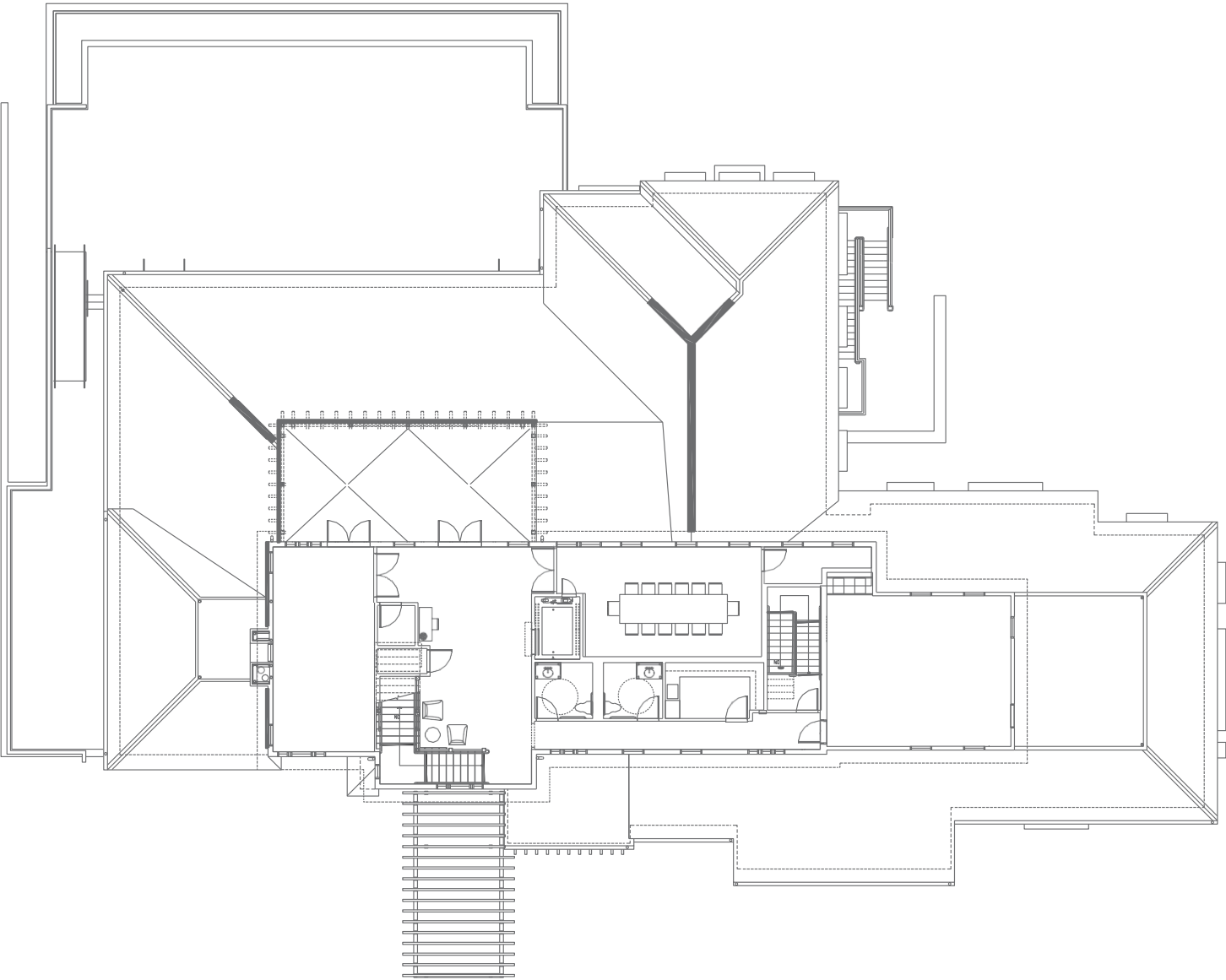
All areas shown on this floorplan are approximate and should not be relied upon to determine precise design or dimensions.



MAIN BUILDING: FIRST FLOOR



MAIN BUILDING: SECOND FLOOR

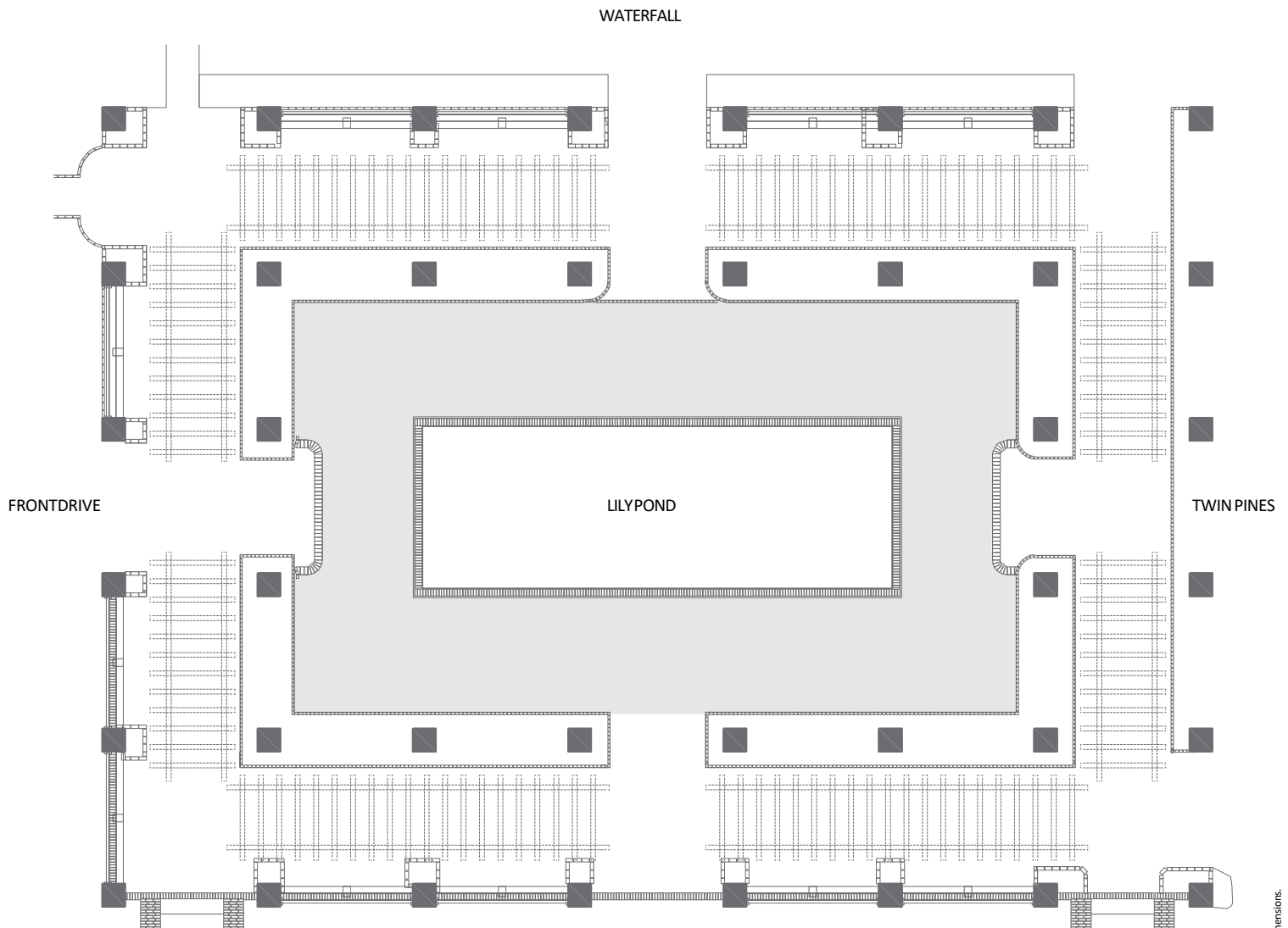




# ARBOR & LILYPOND

4,100 square feet | 160-200 guests

Our cherished landmark featuring lush wisteria serves as a lovely escape for quiet contemplation, beautiful weddings and unique corporate events.



## **EL ENCANTO**

A BELMOND HOTEL  
SANTA BARBARA

EL ENCANTO, A BELMOND HOTEL, 800 ALVARADO PLACE, SANTA BARBARA, CA 93103  
+1 805 845 5800 [RESERVATIONS.ELE@BELMOND.COM](mailto:RESERVATIONS.ELE@BELMOND.COM)